



SUMMERHILL
Commercial Real Estate, LLC

FOR LEASE

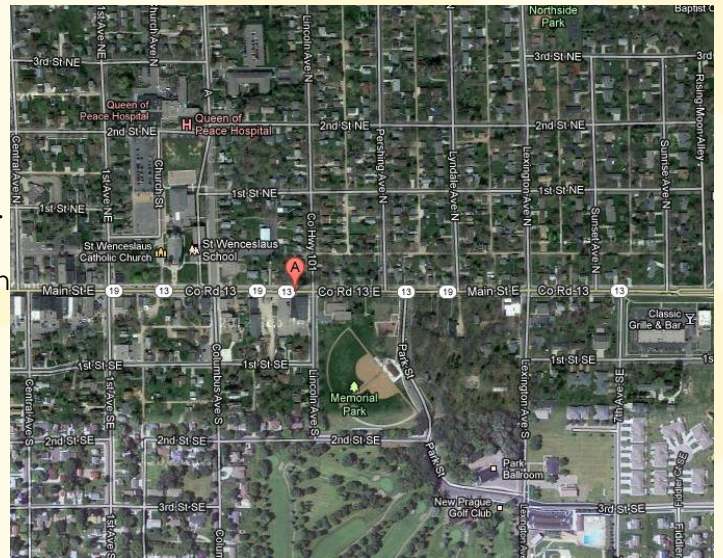
**St. Wenzl Square Building
314-316 East Main Street, Unit 5
New Prague, MN 56071**



Total Square Footage: 840 SF

Gross Rental Rate: \$11.00 PSF Retail/Office/Flex

- Excellent retail/office space with side entrance with awning directly onto parking lot.
- Currently set up for a Laundromat w/high ceilings, office, mechanical room, otherwise, great for other uses.
- Very economical space with abundant natural light.
- Great retail/ofc/mixed use bldg located in downtown New Prague w/excellent visibility on E Main St.
- Daily traffic of 9,600 on East Main St (MnDOT).
- Building signage and street pylon signage available.
- Demographics: 5,787 – 1 mile radius, 9,367 – 3 mile radius, 12,066 – 5 mile radius (ESRI).
- Est. Avg. Household Income: \$64,345 – 1 mile radius, \$67,892 – 3 mile radius, \$72,873 – 5 mile radius (ESRI).



**For more information call:
Peter Kordonowy, CCIM**

952.556.5151

or visit our website at:

www.summerhillcommercial.com