



SUMMERHILL
Commercial Real Estate, LLC

FOR LEASE
368 GEORGE STREET BUILDING
368 George Street
Excelsior, MN 55331

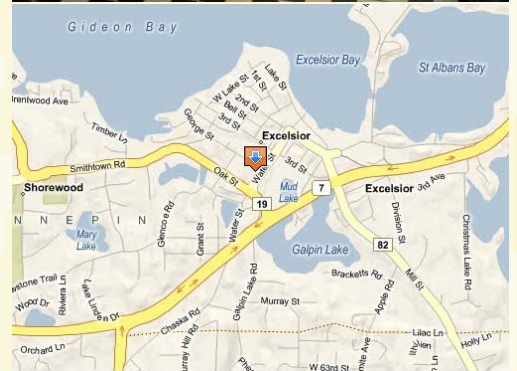


Property Size: 1,156 sf stand alone historic Excelsior building.

Lease Rate: \$23.00 psf net Base Rent

Tax and Common Area Maintenance (CAM): \$7.00 psf

- Number 26 of Excelsior's historic buildings, it was last used as a hair salon. It is still set up for a six (6) stall salon in perfect working order, with four (4) working wash sinks and six (6) salon chairs.
- Located between Gray Gardens and Mason Motors a half block northwest of Water Street.
- Private Parking lot in back with its own private entrance.
- Complete with reception area and an upstairs section also outfitted for salon stations.
- Perfect for many types of retail shops with signage in the front yard.
- Basement used for storage and not included in useable square footage.
- Has inviting entrances both front and rear of the building for customers.
- Great opportunity to develop a new business or build a clientele in the heart of historic Excelsior.



For more information call:
Peter Kordonowy, CCIM or Ted Kordonowy
952.556.5151

or visit our website at:
www.summerhillcommercial.com

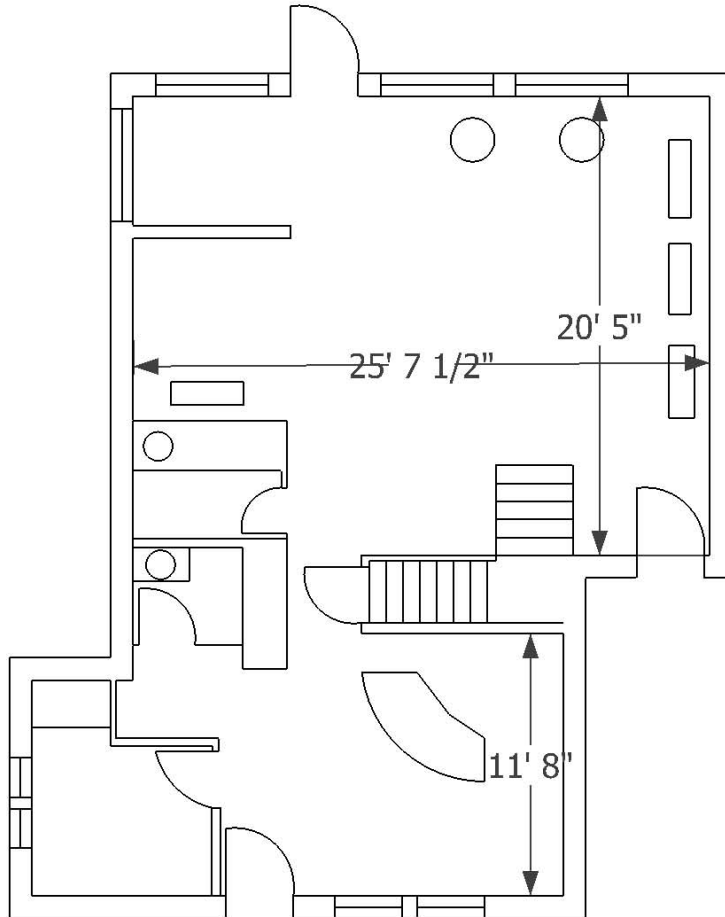


SUMMERHILL
Commercial Real Estate, LLC

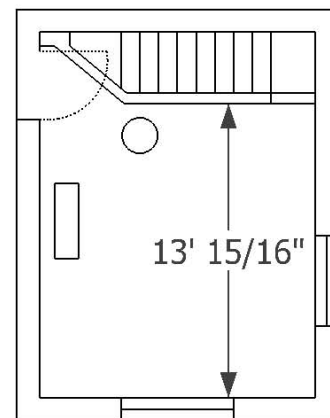
FOR LEASE
368 GEORGE STREET BUILDING

368 George Street
Excelsior, MN 55331

1st Floor



2nd Floor



For more information call:
Peter Kordonowy, CCIM or Ted Kordonowy

952.556.5151

or visit our website at:

www.summerhillcommercial.com