



SUMMERHILL
Commercial Real Estate, LLC

FOR LEASE

6413 Goodrich Avenue
St. Louis Park, MN 55426



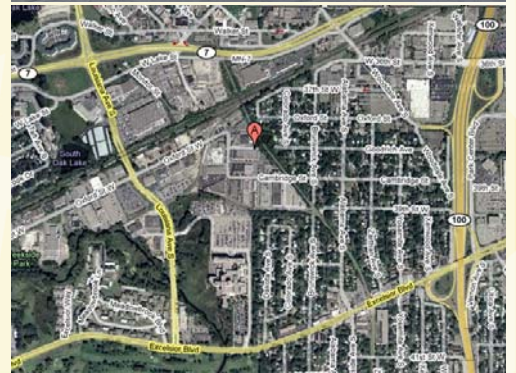
Available: 3,758 sf warehouse

Unit Mix: 637 sf office/3,121 sf warehouse

Base Rental Rate: \$8.25/\$4.25 psf office/warehouse

2011 Est. Tax and Common Area Maintenance (CAM): \$2.00 psf

- Great hard to find small bay space.
- 14' clear height, ample power.
- Single bay dimension of 31.25' wide by 120.25' deep.
- Space has white painted warehouse walls, block wall separation to neighboring tenants, and good lighting.
- One (1) 10' x 12' drive in door.
- Convenient central location less than one (1) mile from Hwy 100 right off Louisiana between Hwy 7 and Excelsior Blvd.
- Locally owned and managed, newly renovated building.
- Conveniently located near many area amenities.



For more information call:
Peter Kordonowy, CCIM

952.556.5151

or visit our website at:

www.summerhillcommercial.com

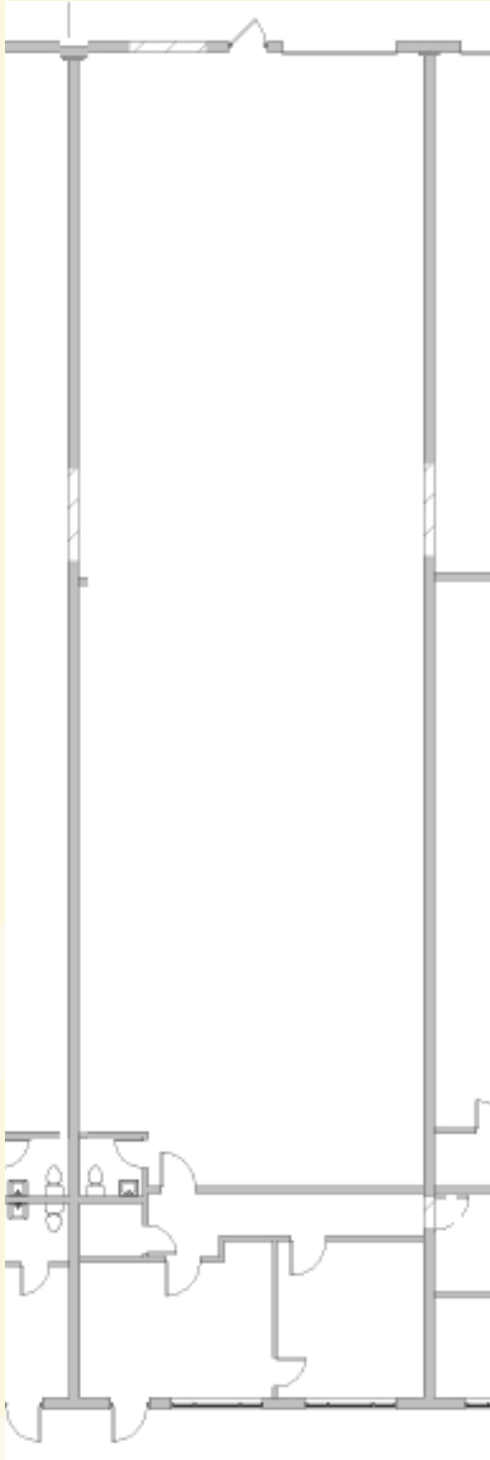


SUMMERHILL

Commercial Real Estate, LLC

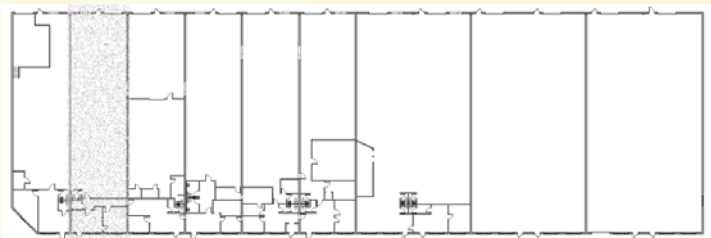
FOR LEASE

**6413 Goodrich Avenue
St. Louis Park, MN 55426**



Key Plan

N↓



For more information call:
Peter Kordonowy, CCIM

952.556.5151

or visit our website at:

www.summerhillcommercial.com