

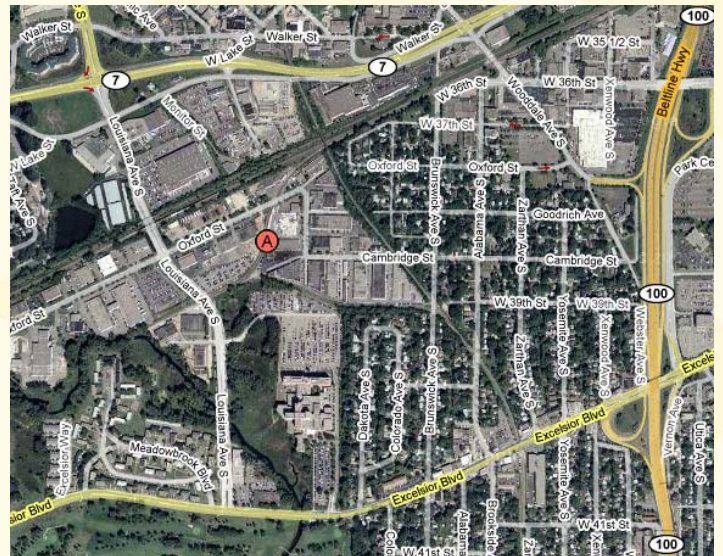


SUMMERHILL
Commercial Real Estate, LLC

FOR LEASE
6521 Cambridge Street
St. Louis Park, MN 55426



- Available:** 3,460 sf office/warehouse
Unit Mix: 570 sf office/2,890 sf warehouse
Base Rental Rate: \$6.00/\$3.00 psf office/warehouse
2009 Estimated Tax & CAM: \$2.10 psf
- Available February 1, 2009.
 - White painted warehouse with good lighting.
 - 12' clear height, one (1) 10' x 10' drive in door.
 - 40' wide bay width, two (2) private offices.
 - Convenient central location less than one (1) mile from Hwy 100 right off Louisiana between Hwy 7 and Excelsior Blvd.
 - Locally owned and managed, near many amenities.



For more information call:
Peter Kordonowy

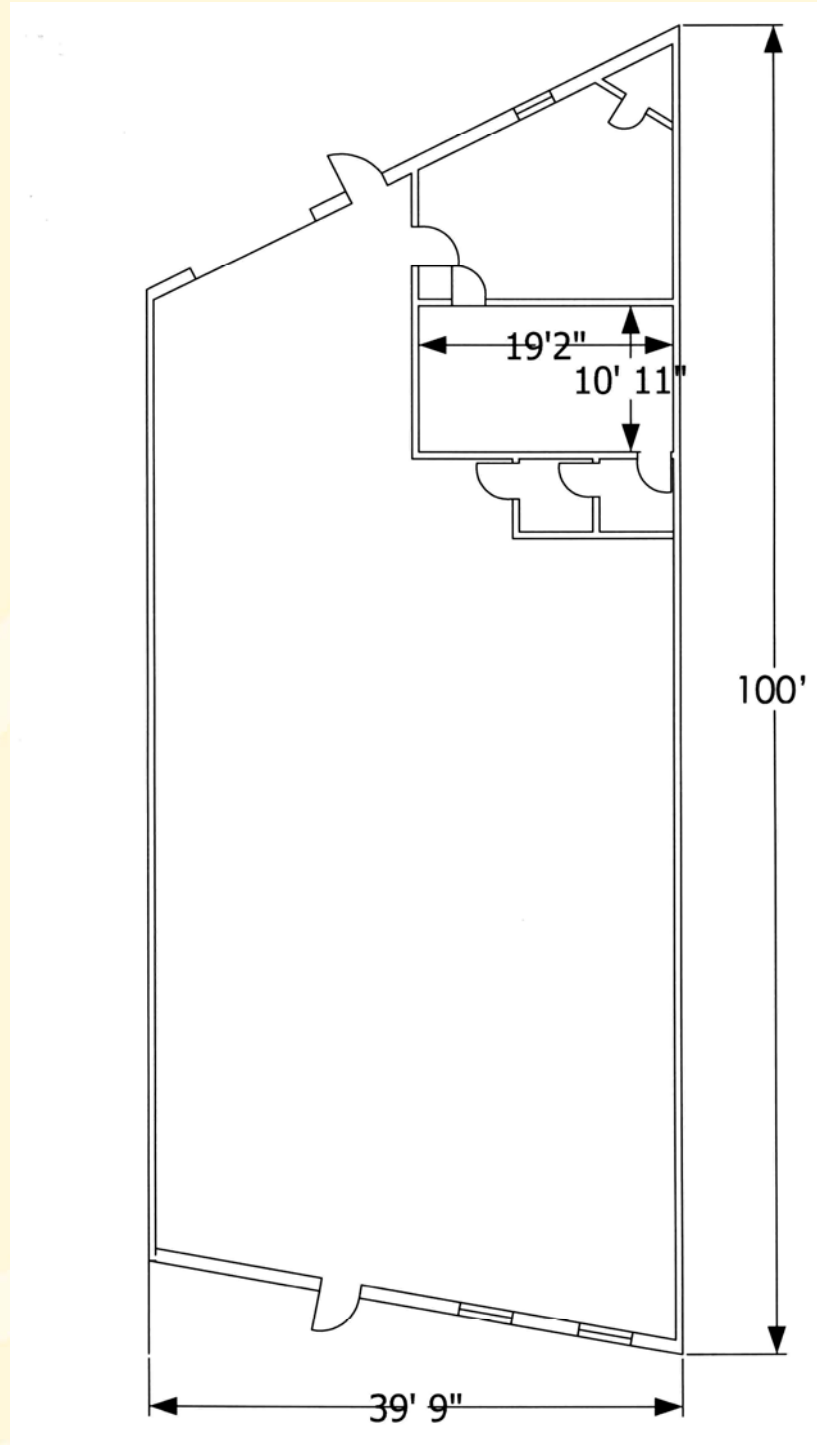
952.556.5151

or visit our website at:
www.summerhillcommercial.com



SUMMERHILL
Commercial Real Estate, LLC

FOR LEASE
6521 Cambridge Street
St. Louis Park, MN 55426



For more information call:
Peter Kordonowy

952.556.5151

or visit our website at:

www.summerhillcommercial.com