



**SUMMERHILL**  
Commercial Real Estate, LLC

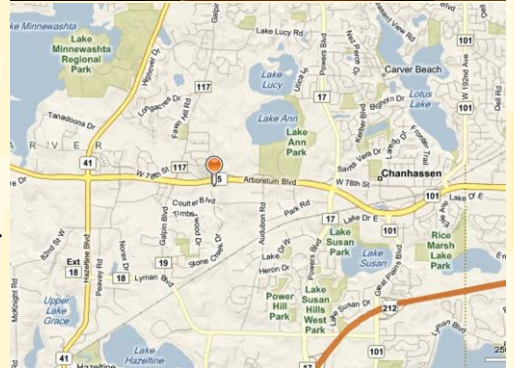
# FOR SALE

## STONE CREEK OFFICE CONDO

7915 Stone Creek Drive, Suite 130  
Chanhassen, MN 55317



- Property Size:** 1,536 sf end cap town office condominium.  
**Offering Price:** \$210,000/\$136.72 psf.  
**Est. Real Estate Tax (2015):** \$412.50 monthly/\$3.22 psf.  
**Est. Assoc. Dues (2015):** \$199.46 monthly/\$1.56 psf.
- Great town office condo unit built in 2005. Professional high end finishes.
  - Located directly inside the entrance of Stone Creek office complex.
  - Seller is an original owner of the property.
  - Attractive south facing end cap unit w/9' ceilings & glass on (3) sides.
  - Unit has (5) private offices, front reception area w/built in counters cabinetry, kitchenette/storage room, ADA restroom, & mechanical room.
  - Front office w/french doors is currently used as a conference room.
  - Custom lighting including pendant lights and sconce lighting.
  - Located 7-8 minutes from Eden Prairie Center & I-494 via 212 or 5.
  - Great Chanhassen location within Stone Creek Office park right on Hwy 5.
  - Plenty of parking in front of the suite for clients and employees.
  - Chanhassen trail system access in front of the property.
  - Close to many great amenities in booming and affluent Chanhassen, MN.



**For more information call:**  
**Peter Kordonowy, CCIM**  
**952.556.5151**

or visit our website at:  
[www.summerhillcommercial.com](http://www.summerhillcommercial.com)

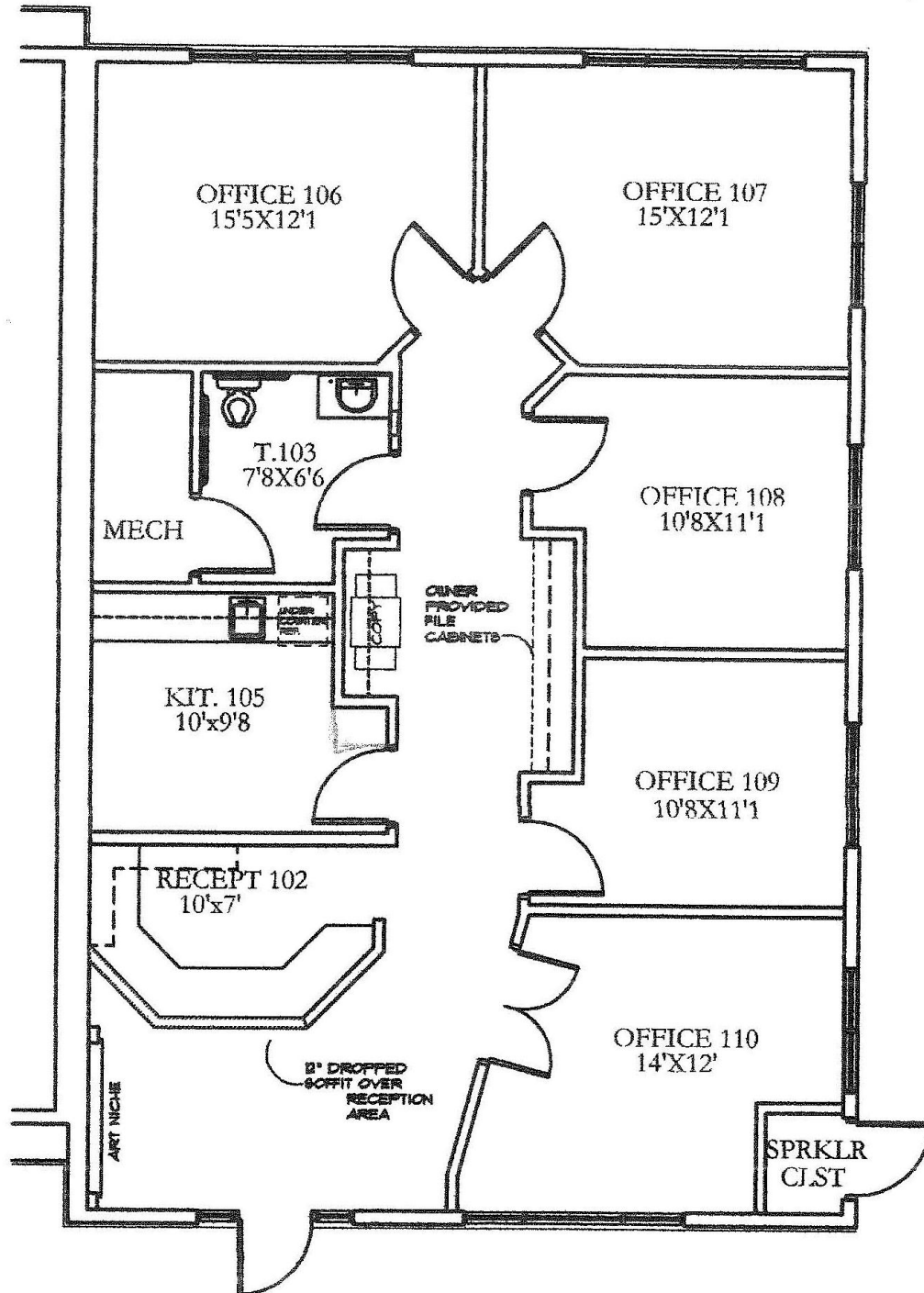


**SUMMERHILL**

Commercial Real Estate, LLC

# FOR SALE STONE CREEK OFFICE CONDO

7915 Stone Creek Drive, Suite 130  
Chanhassen, MN 55317



For more information call:  
Peter Kordonowy, CCIM

**952.556.5151**

or visit our website at:

[www.summerhillcommercial.com](http://www.summerhillcommercial.com)