



**SUMMERHILL**  
Commercial Real Estate, LLC

**FOR LEASE**

**Arboretum Business Park I**  
**8151-8157 Century Boulevard**  
**Chanhassen, MN 55318**

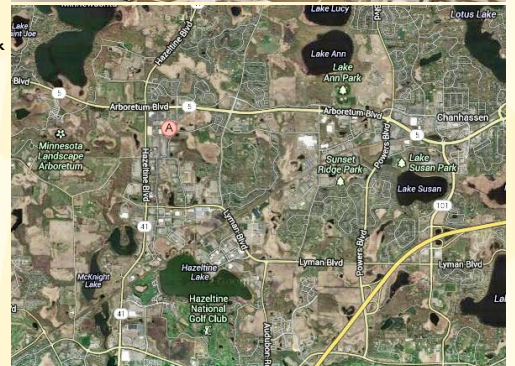


**8151-8157 Century Blvd:** 12,840 sf (2,548/10,292 sf office/warehouse).

**Base Rental Rate:** \$9.75/\$4.50 psf office/warehouse.

**2018 Est. Tax & CAM:** \$2.96 psf (\$1.82 psf tax/\$1.14 psf CAM).

- Available June 1, 2018.
- Nice office finishes with a combination of privates & open areas.
- Leasehold improvements available.
- 24' clear warehouse w/ ESFR sprinklering for high pile storage.
- (2) truck high dock doors w/a large truck court area for shipping & receiving. Potential to convert (1) door to a drive in door.
- 40' x 40' column spacing, building depth of 160',
- Great Highway 5 & 41 location in Chanhassen by many amenities.
- Excellent freeway access at Highway 212 & Powers Boulevard.
- Direct access to the City of Chanhassen trail system.
- Well maintained, locally managed, building built in 1998.



**For more information, call or e-mail:**

**Joe Smith @ [jsmith@summerhillcommercial.com](mailto:jsmith@summerhillcommercial.com)**

**952-475-5122**

**or**

**Peter Kordonowy @ [peterk@summerhillcommercial.com](mailto:peterk@summerhillcommercial.com)**

**952-475-5135**

**or visit our website at:**

**[www.summerhillcommercial.com](http://www.summerhillcommercial.com)**

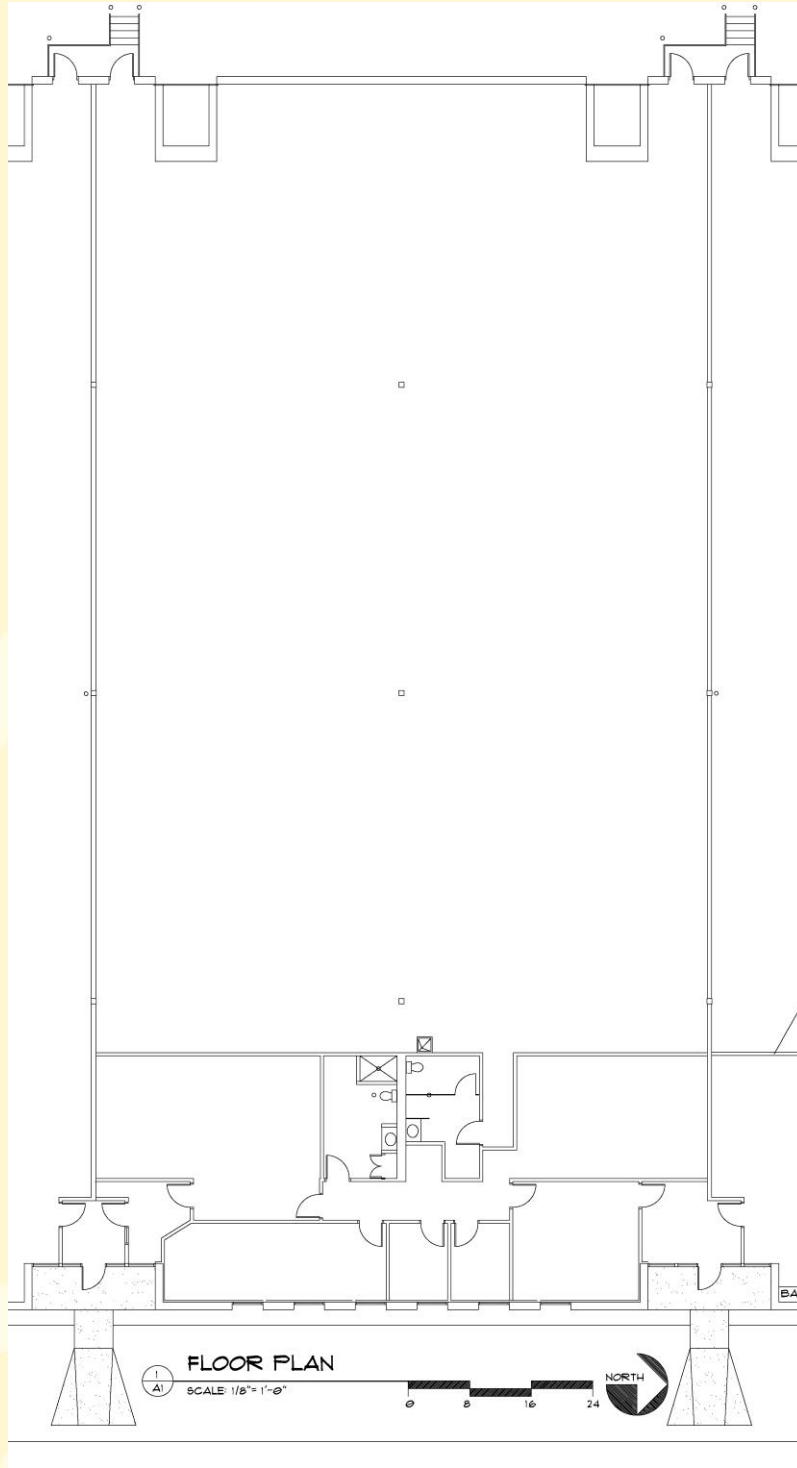


**SUMMERHILL**

Commercial Real Estate, LLC

**FOR LEASE**

**Arboretum Business Park I  
8151-8157 Century Boulevard  
Chanhassen, MN 55318**



For more information, call or e-mail:

Joe Smith @ [jsmith@summerhillcommercial.com](mailto:jsmith@summerhillcommercial.com)

952-475-5122

or

Peter Kordonowy @ [peterk@summerhillcommercial.com](mailto:peterk@summerhillcommercial.com)

952-475-5135

or visit our website at:

[www.summerhillcommercial.com](http://www.summerhillcommercial.com)