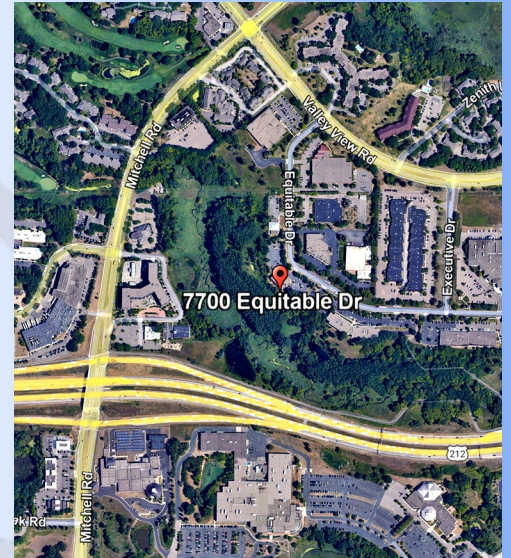


OFFICE FOR LEASE

7700 Equitable Drive
Eden Prairie, MN 55344



SUMMERHILL
Commercial Real Estate, LLC



LEASE DETAILS:

7700 Equitable Drive, Eden Prairie, MN 55344

| | |
|---|------------------------------|
| Suite 205: | 1,366 sf available |
| Suite 202: | 292 sf available |
| Base Rent: | \$14.00 per SF |
| RE Taxes and Common Area Expenses: | \$10.51 per SF (est.) |

FEATURES:

- Attractive, clean image, 2 story professional office building with an elevator.
- Suite 205 is a desirable 2nd floor corner space with abundant windows, (4) private offices, (4) workstations and copy/work room. (1) office can be a conference room.
- Suite 202 is a small single/(2) person office with a small reception area..
- The building has ample parking and is adjacent to Purgatory Creek.
- Quiet location yet near Highway 212, Prairie Center Drive and Mitchell Road.
- Both availabilities overlook a beautiful wooded nature area.
- Many amenities are nearby include Eden Prairie Center, restaurants, banking, grocery, extensive retail and much more.
- Excellent freeway access nearby as well as ample nature trails.

**All information in this brochure is deemed reliable, but not guaranteed.*



CONTACT:

Joe Smith

jsmith@summerhillcommercial.com

952-475-5122

Summerhill Commercial Real Estate

6495 City West Parkway

Eden Prairie, MN 55344

www.summerhillcommercial.com

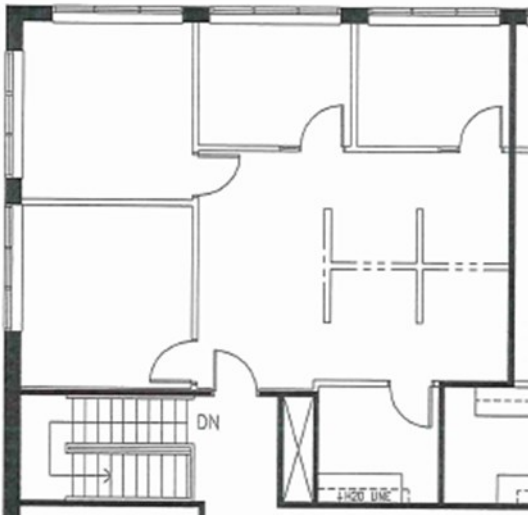
FOR LEASE OFFICE

7700 Equitable Drive
Eden Prairie, MN 55344

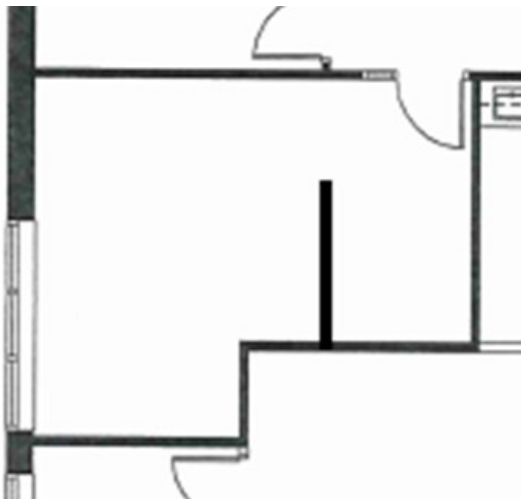


SUMMERHILL
Commercial Real Estate, LLC

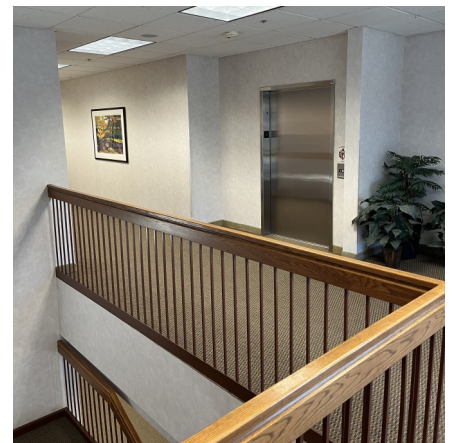
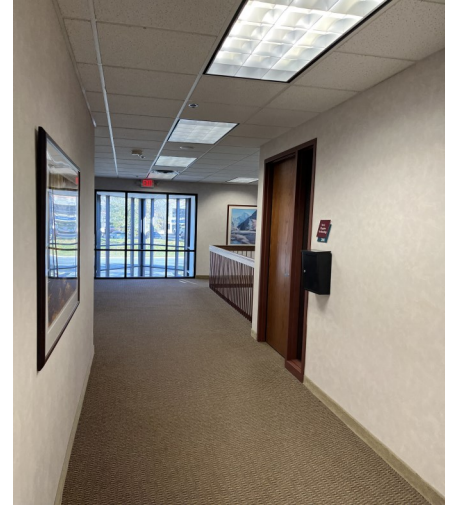
AVAILABLE SUITES



SUITE 205



SUITE 202



CONTACT:

Joe Smith
jsmith@summerhillcommercial.com
952-475-5122

Summerhill Commercial Real Estate
6495 City West Parkway
Eden Prairie, MN 55344
www.summerhillcommercial.com